



Failand  
Residents  
Against  
Speeding



# Failand village

Request for action  
Traffic Management

# Background

- Failand's residents are concerned about the volume and speed of traffic through the village
- Vulnerable road users and residents are placed at risk
- With many commuters there is need to provide clear guidelines to motorists
- This beautiful countryside location is being spoiled
- We are asking for help



# What makes a village

- ✓ There are 20 or more houses
- ✓ It is longer than 600 metres
- ✓ It has houses all along one side
- ✓ There is on average more than 3 houses every 100m
- ✓ The average frontage is not too deep
- ✓ The road is not very wide
- ✓ There are several groups of vulnerable road users
- ✓ The houses at either end of the road have smaller frontages and are closer together

# Vulnerable road users

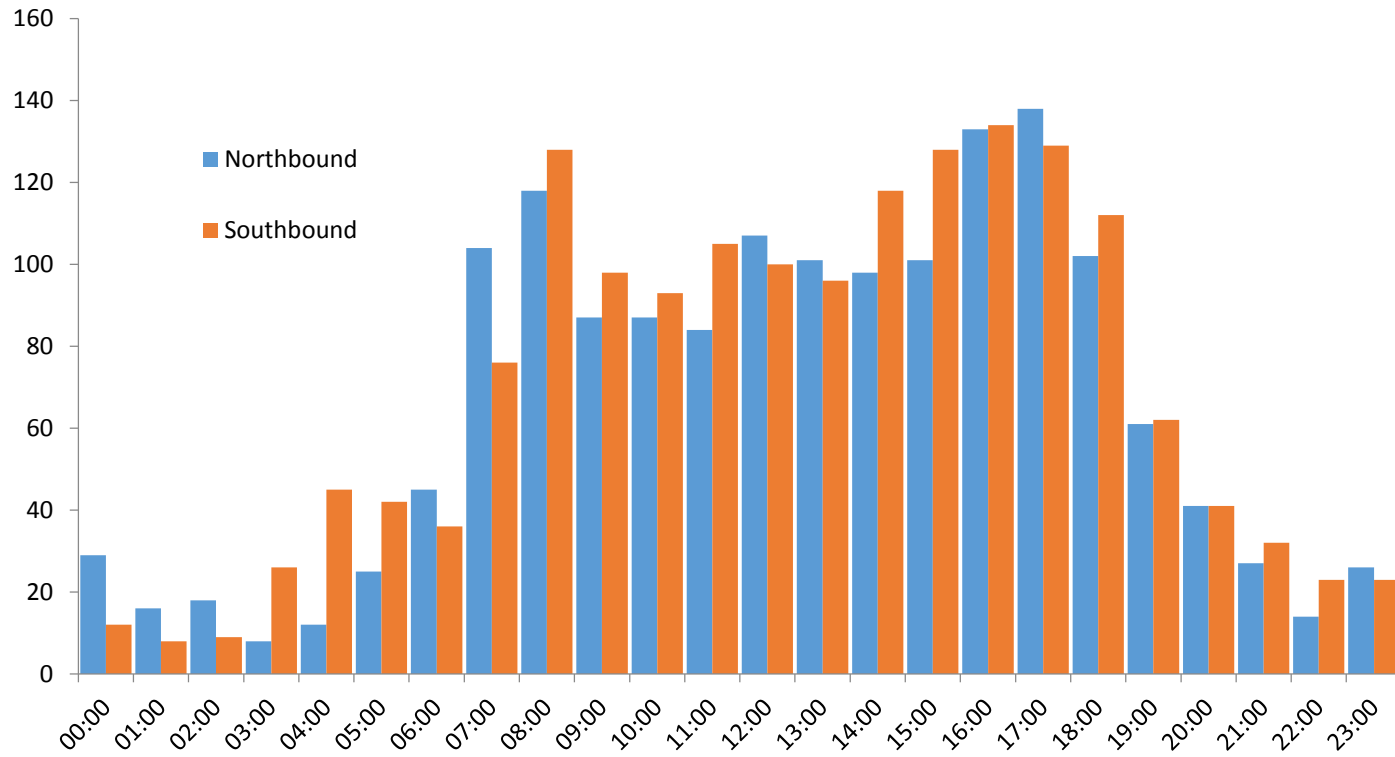
- Cyclists
  - Mountain bike routes surround our village
  - Belmont Hill a favourite road bike route
- Walkers
  - Older residents and children using the pavements to access local amenities
  - Passing walking groups using the areas footpaths
- Runners
  - Using the pavements around the Failand triangle
- Horse riders
  - From the local equestrian clinic

## Flax Bourton Rd - Types of traffic

- High volume of mini buses and taxis going to and from Bristol Airport
- Commuters heading to and from North Bristol and the M5
- Increasing number of LGVs, HGVs and coaches
- Because the traffic is mostly passing through, the need for appropriate measures is more acute
- High % drivers adhere to sensible speed for residential street
  - This causes those who are not as considerate to drive dangerously

# Traffic flow analysis

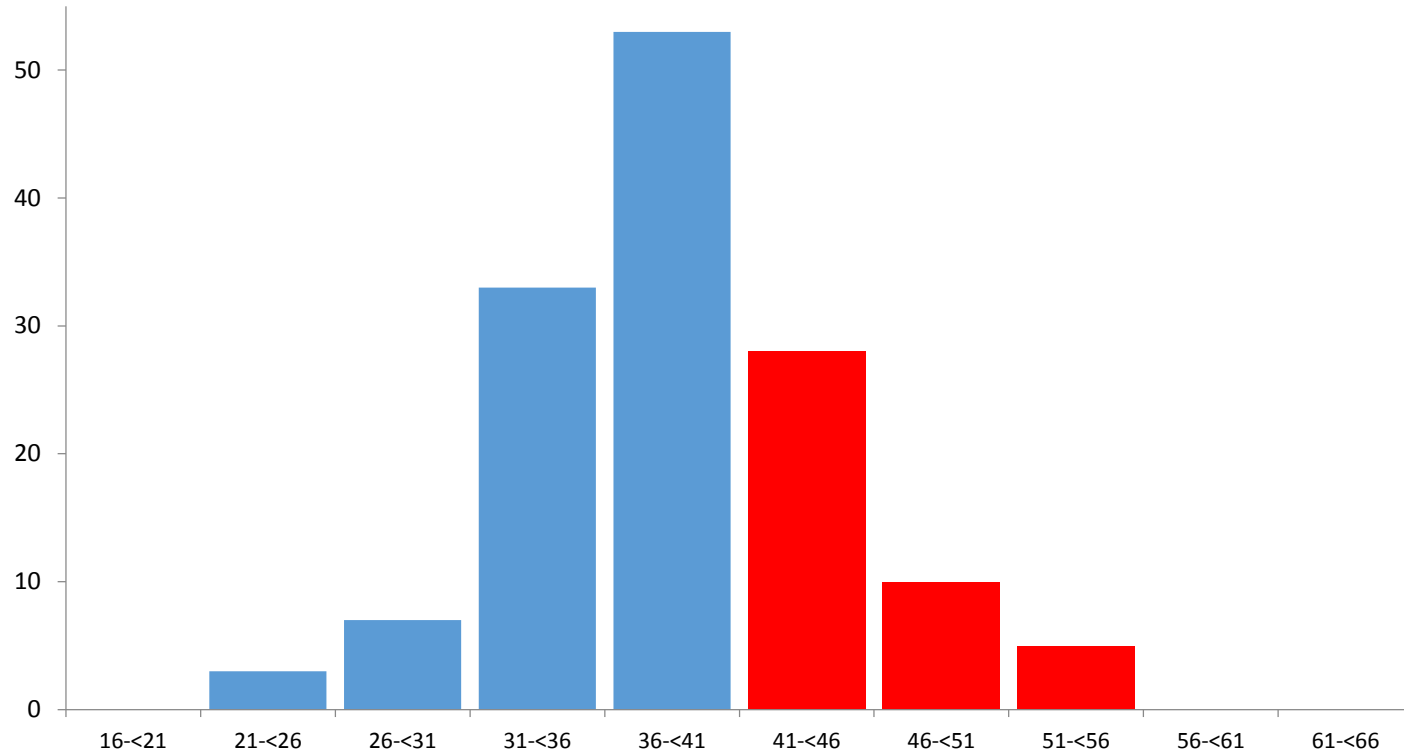
## Flax Bourton Rd volumes



Note: All flow data is skewed by additional Bristol airport signage for duration of survey at jcn 19 M5 & the survey conducted in 2 weeks after school summer holidays

# Traffic flow analysis

Northbound on Flax Bourton Rd @ peak time (5pm)



*Note: All flow data is skewed by additional Bristol airport signage for duration of survey at jcn 19 M5 & the survey conducted in 2 weeks after school summer holidays*

# Current Issues

- The speed restriction sign that gate the entrance to the village are either missing or hard to see  
(Replaced last week)
- There are insufficient repeaters along Flax Bourton road
- There are no additional traffic calming measures in the village
- Airport traffic whilst not signed down Flax Bourton road or Failand continue to follow this route as a cut through
- A failure to properly advise motorists, and then police the village, has encouraged poor driving behaviours
  - E.g. overtaking, driving too close to horses, cyclists and pedestrians
- A high number of traffic incidents affecting residents and recently more serious RTAs
- Considerate motorists who reduce their speed are overtaken and tailgated by inconsiderate motorists
  - Situation worsened as the signage is very poor and the speed limit too high



## Case Study 1

### Old Sodbury

- Recent reduced speed limit (40 > 30)
- Very clear signs
- An electronic speed awareness sign
- No calming measures

## Case Study 3

### Barrow Gurney

- Speed humps
- A 20 mph speed limit
- An electronic speed awareness sign
- Road Markings

## Case Study 2

### Chew Stoke

- Lane size restrictions
- A 20 mph speed limit
- An electronic speed awareness sign
- Road Markings

## Case Study 4

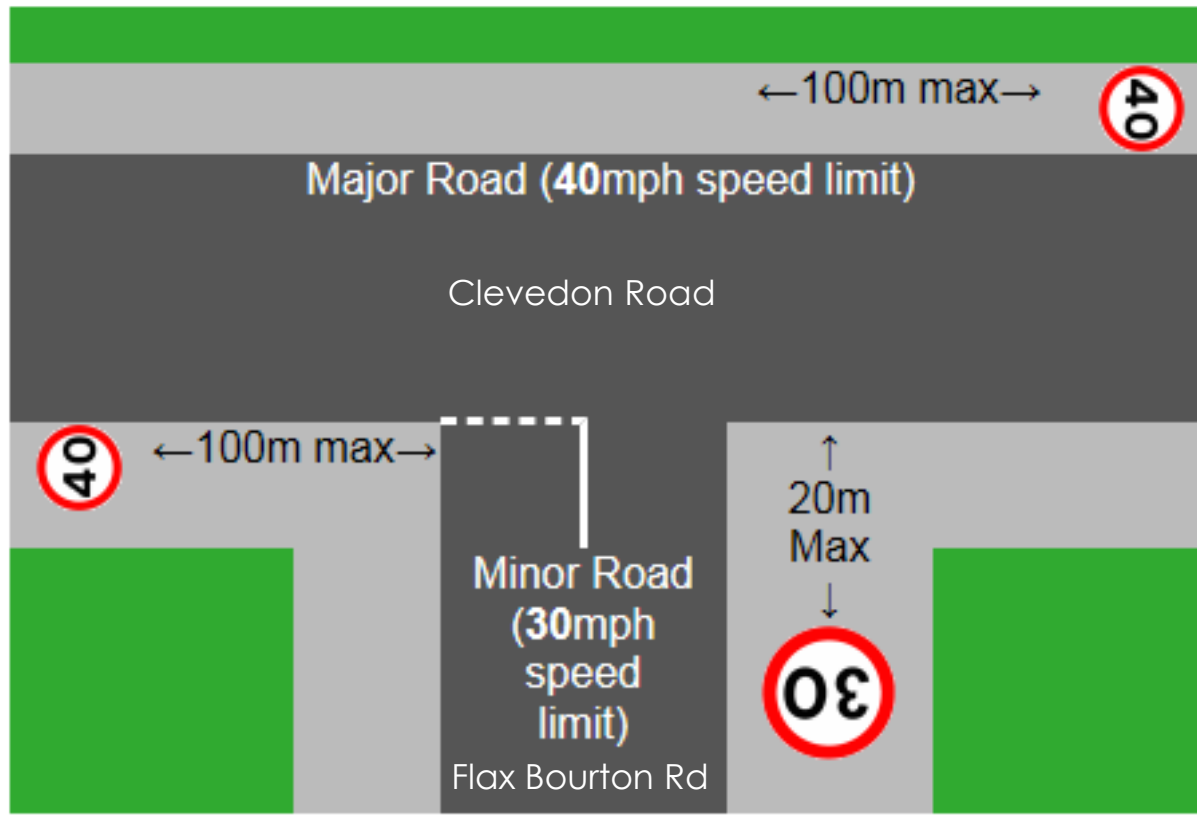
### Portbury

- Lane size restrictions
- A 20 mph speed limit
- Road markings

# Failand Residents Against Speeding



# Formulae for speed limit



# Our Request

- Reduce speed limit to 30mph
- Ensure appropriate signage is provided
  - Gated entrance markers
  - Repeaters
  - Road surface markings
- Traffic calming measures to be considered
  - As per that deployed in Portbury, Clapton in Gordano & Barrow Gurney
- Recruit new members of the “Community Speed Watch team” once the speed limit is reduced and signage introduced
- Support a request to mapping providers e.g. Google and NavTeq to discourage use of Flax Bourton Road in sat nav & online mapping tools
- Ensure the Bristol link road has suitable access from Clarken Coombe so traffic cutting down Flax Bourton Road and Belmont Hill is reduced
- Engage Bristol Airport in understanding the negative impact increased passenger numbers is having on our village

# Funding options

- Bristol Airport
  - A formal complaint has been raised (8s067ejg)
- North Somerset Council
  - Starts today!
- Parish Council
  - Already engaged
- Residents contributions?